

**CT DEEP** **2017**  
**FISHING REPORT NUMBER 3**  
**4/27/2017**



Brook Trout (*Salvelinus fontinalis*)



**YOU CAN FIND US DIRECTLY ON FACEBOOK.** This page features a variety of information on fishing, hunting, and wildlife watching in Connecticut. The address is [www.facebook.com/CTFishandWildlife](https://www.facebook.com/CTFishandWildlife).

**SHARE THE EXPERIENCE**  
Take someone fishing

## INLAND REPORT

**THIS IS THE WEEKEND TO GET OUT AND FISH FOR TROUT!** DEEP's in-season stockings are well underway, temperatures are expected to be very warm and flows are near ideal in many places.

**TROUT - RIVERS & STREAMS** - Conditions for trout fishing should be good this weekend in most areas. The much needed April rains had been keeping flows in many areas variable and often on the high side. Flows are now at very fishable levels (actually are at typical late April levels in most areas - *see stream flow graphic on page 5*), warm (hot) weather (with a few showers) is forecast, and there are plenty of stocked trout waiting for anglers. With water temperatures warming and flows slowing further, fishing should continue to improve.

Reports are promising with good action in many of the waters that were previously difficult to fish, the Hammonasset and Farmington were fishing much better, some nice reports from the Fenton River, and the Housatonic was picking up. The West River remains slows however. Some bait & lure favorites seem to be mealworms, Pink Powerbait, various small Mepps spinners and the ole reliable-Phoebe goldfish. Fly fishing has been thriving on nymphs and streamers, but more bugs are starting to come out and it's getting to be dry fly time. Mayflies like the Hendricksons, Blue-Wing Olive, and a variety of Duns will become active with the sudden burst of warm temperatures.

**Farmington River** - Fishing was mostly fair last week with flows on the high side. Conditions should be much better for the upcoming weekend with comfortable weather forecast and clear, moderate flows, currently 321 CFS at Riverton plus an additional 222 CFS from the Still River (barring some localized thunderstorms, Still River flows should continue to drop through the weekend.) Water temperatures range from the low 40's to around 50 °F.

**Anglers- ALL**

of your dollars invested in a fishing license go to support fish and wildlife!



State law (CGS 26-15a) requires **100% of the fees collected from the sale of sporting licenses** to be allocated from the General Fund to the Department of Energy and Environmental Protection, Bureau of Natural Resources.

**Your investment makes a difference. Thank You.**

**Hatches/patterns.** Typical mid-April hatches/patterns continue as temps have been struggling to move upwards. Some good ones to cast include Blue Wing Olive, Hendrickson (a few here and there, most in Canton but beginning to move upriver, most will appear later in mass when it warms up more), Winter/Summer Caddis, Pheasant Tails, Hares Ears, Stonefly nymphs, Midge and Blue Quill. Nymphs (#18-22) are always a good go-to fly, try Bead Head, Midge Pupa, Brassie, Zebra Midge or Copper John patterns. Streamers are also a good option (White Zonkers & Buggers (#4-12) as well as Muddlers, Micky Finn, Grey or Black Ghost).

**Housatonic River** - Conditions for the weekend should be very good as almost the entire river was stocked (both the upper TMA and the Bulls Bridge/Ten Mile River TMA). Comfortable weather is forecast and flows continue to drop into more fishable levels. Currently flows are “clearing”, and actually slightly lower than (currently 1,200 CFS at Falls Village and 1,940 CFS at Gaylordsville) for typical flows in late April. Morning water temperatures are currently in the mid 50’s °F.

Typical patterns for mid-April are still working including; March Brown (#10-12), Pheasant Tail (#12-18), Stoneflies (#6-10), Pheasant Tails (#14-20), and Black Stoneflies (#18-22). Hendriksons reportedly are beginning to show. Nymphing (try Bead Head, Midge Pupa or Copper Johns) and streamers (such as White/Yellow Zonkers or Wooly Buggers) are good options for fishing the current flows.

**Rivers and streams stocking update (Note that all stocking schedules are subject to change):**

In **eastern Connecticut**; the **Jeremy River**, **Little River** (Canterbury), **Eight Mile River**, **East Branch Eight Mile River**, **Hunts Brook**, **Mashamoquet Brook**, **Tankerhoosen River**, **Hockanum River** (upstream of TMA and downstream of TMA), **Moosup River**, **Latimer Brook**, and the **Quinebaug River** (Griswold, Putnam & Plainfield sections) were stocked.

In **western Connecticut**; the **Housatonic River TMA** (Housatonic River – Cornwall/Sharon area), **Muddy River**, the **Bulls Bridge TMA** (Housatonic River and Ten Mile River– Bulls Bridge/Gaylordsville area), **Farmington River** (Farmington-Tariffville), **Pequonnock River**, **Mill River TMA** (Fairfield), **Saugatuck River** (both the upper river and the TMA), and the **Farmington River TMA** (year-round catch-and-release area only) were stocked.

**TROUT-LAKES & PONDS** - Fishing continues to be in the doldrums at many locations, with reports from Highland Lake (fair-good action reported), Quonnipaug Lake (still on the slow side, but fishing has



*The awe of trout. An Ansonia youth watches as trout are being readied for stocking into Colony Park Pond.*

improved), East Twin Lake (remains rather low), Crystal Lake (fair to good, but lots of catches in the slot), and Candlewood Lake (slow to fair).

**Lakes and ponds stocking update (Note that all stocking schedules are subject to change):**

In **eastern Connecticut**; **Pasture Pond, Crystal Lake, Bashan Lake, Wyassup Lake, Black Pond** (Woodstock), **Broad Brook Mill Pond, Uncas Lake, Black Pond** (Middlefield), **Higganum Reservoir**, and **Rogers Lake** were stocked.

In **western Connecticut**; **Baummer Pond, Fountain Lake, Twin Brooks Pond, Hop Brook Lake, Prospect Town Park Pond**, and **Mohegan Lake** were stocked.

**TROUT PARKS** – The **Day Pond, Wharton Brook, Stratton Brook, Black Rock (both Black Rock Pond and Branch Brook), Valley Falls Park Pond, Chatfield Hollow** (brook only), **Kent Falls, Southford Falls**, and **Wolfe Park (Great Hollow Pond) Trout Parks** were stocked this week. Good to very good reports from Chatfield Hollow

**COMMUNITY FISHING WATERS**- **Colony Pond (Abe Stone Park Pond), Keney Park Pond, Upper Fulton Park Pond**, and **Bunnells Pond** (Beardsley Park Pond) were stocked.

**LARGEMOUTH BASS** fishing is picking up in a number of areas, but bass are still finding their spring spots and temperatures are warming only slowly. Fair

to good reports from Candlewood Lake (some 5 to 6-lb bass are being found), Uncas Lake (some 4-lb bass being found), and Ball Pond (including a 5.21 lb largemouth). Lower Bolton Lake and Mudge Pond were slow last week. **Tournament angler** reports are from Candlewood Lake (fair to good, with bass in the 4-6 lb range, and a 6.16 lb lunker), Pachaug Pond (this past weekend some did well and some couldn't buy a fish, with a 4.8 lb lunker; the weekend prior was better, with more fish per angler), Mansfield Hollow Reservoir (tough fishing with half the field getting limits or close, and half not finding anything, some nice size with 6 fish over 3 lbs and average weight per fish of 2.2 lbs and 4.56 & 4.50 lb lunkers), Amos Lake (fair to good, with a 3.54 lb lunker), and Wyassup Lake (fair to good action, with a 3.99 lb lunker).

**SMALLMOUTH BASS.** Smallmouth are being found, with good to very good reports from Candlewood Lake. Some action also being found at Highland Lake and Lake Zoar. Good to very good

**Tournament angler** reports also from Candlewood Lake for many anglers with some monstrous bags of mostly smallmouth including 38.8 lbs for a two man team with an 8-fish limit (there were 8 bags over 30 lbs for this team tournament) and a 24.87 bag (5 fish limit) for another club. Lunkers included several smallies over 5 lbs. a tournament on Colebrook River Lake found only slow-fair fishing with a 4.19 lb lunker, and water that was "high and cold."

**WALLEYE** Catches reported from Batterson Park Pond, CT River (Enfield), Beach Pond and Saugatuck Reservoir.

**ZEBRA MUSSELS REMINDER**

**Zebra mussels are now found in a number of locations scattered throughout the Housatonic River and its impoundments including Lake Lillinonah (since 2010), Lake Zoar (since 2010) and Lake Housatonic (since 2011).**

Prior to their discovery in Lakes Lillinonah and Zoar in 2010, zebra mussels had been found (1998) in CT only in East Twin Lake and West Twin Lake (Salisbury). Anglers fishing in any of these waters and western Connecticut in general **should use extra care to avoid transporting water, aquatic vegetation, and possibly zebra mussels to new locations.** Information

For more information including precautions that should be taken to prevent the spread of zebra mussels to additional waters, visit [www.ct.gov/deep/invasivespecies](http://www.ct.gov/deep/invasivespecies) or the Aquatic Invasive species section of the 2017 CT angler's Guide ([www.ct.gov/deep/anglersguide](http://www.ct.gov/deep/anglersguide)).





**COMMON CARP** are really hitting well with pre-spawn action. Good advice from an avid Carp-er. “To all anglers looking to get into carp fishing please get a fish friendly net and a landing mat to place your fish on for unhooking and during the photo shoot! These are the biggest fresh water fish in CT and they are also very easily damaged due to poor landing and release!”

### CONNECTICUT RIVER

The river remains cool and somewhat turbid, but flows have dropped and are now at typical late-April levels. Some **AMERICAN SHAD** have definitely started. Anglers are catching fish at the Farmington (some good action here earlier this week and over the weekend – has slowed some since), netters are getting them from Old Saybrook to Rocky Hill, and the Rainbow and West Springfield fishways continue to pass small numbers of shad.. It’s just the beginning, of course, but the run is now on in earnest. With recent rains and warm weather coming this weekend, we are anticipating logging pretty good numbers next week. Shad darts and willow leafs generally work well. **STRIPED BASS** are being found in the lower river, mostly schoolie size fish and the action is spotty. **LARGEMOUTH BASS** are beginning to bite in the lower coves (Hamburg Cove, Salmon River). Some spring **CARP** fishing is being found in coves and shallow tributaries. Also, there are rumors of some **CATFISH** action starting.

### NOTES & NOTICES:

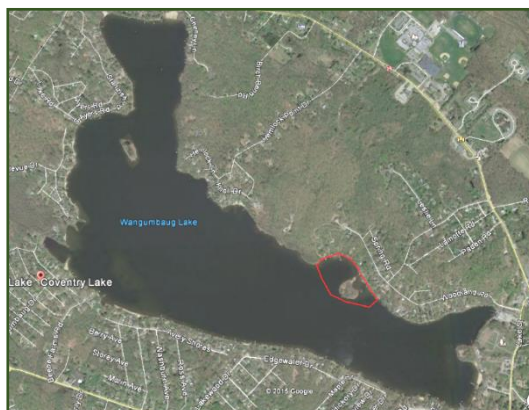
**DRAWDOWN UPDATES – BASHAN LAKE**, and **DOOLEY POND** have refilled and the state boat launches on these two lakes are open to use. **HANOVER POND** has also refilled.

**BRANFORD RIVER (boat launch)**. The Branford River state boat launch continues to be closed for renovations. Alternative nearby launch sites include the Guilford Town boat launch and the East River State boat launch, both in Guilford.

**CONNECTICUT RIVER (invasive species alert)**. Hydrilla was recently found in the main stem Connecticut River in Glastonbury (near Glastonbury’s Riverfront Park & Boathouse). See the Coventry Lake entry below for what river users should do to prevent spread of this invasive plant to other waterbodies.

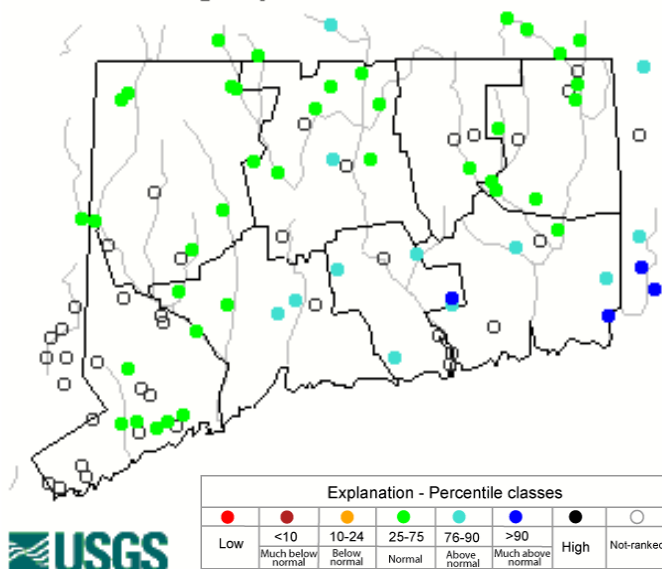
**COVENTRY LAKE (invasive species alert)**. Hydrilla, a very highly invasive aquatic plant, has been found growing in Coventry Lake. All lake users should take extra care to check and clean their boats (including canoes, kayaks and rowing sculls), trailers, and fishing equipment before leaving the boat launch, or leaving the lakeshore.

*Coventry Lake (Wangumbaug Lake) boaters should avoid the area outlined in red to avoid fragmenting and spreading hydrilla. This is only area in the lake where hydrilla has been found.*



**GLASGO POND (drawdown)**. Glasgo Pond remains drawn down approximately 4 feet to facilitate dam modifications.

**HOUSATONIC LAKE (rowing regattas)**. Both college and high school rowing regattas are scheduled for **Saturday, April 29<sup>th</sup>**. The college event runs from 8:00 am to 3:00 pm, and the high school event is from 3:30 pm to 5:30 pm. Boaters should use additional caution on the lake.

**STREAM FLOW CONDITIONS (as of 4/27/2017)****Thursday, April 27, 2017 19:30ET**

Data in the state graphic to the left are generated by the United States Geologic Survey (USGS) and are available on line at: <http://waterdata.usgs.gov/ct/nwis/rt>

A percentile is a value on a scale of one hundred that indicates the percent of data in the data set equal to or below it. For example streamflow greater than the 75<sup>th</sup> percentile means only ¼ of the streamflow values were above the value and thus would be considered “above normal”. Stream flow between the 25<sup>th</sup> and 50<sup>th</sup> are considered to be “normal flows” and those 25<sup>th</sup> or less are considered to be “below normal”.

**NEW INTERACTIVE TROUT STOCKING MAP NOW AVAILABLE.**

Anglers can find more information on trout stocking online. A list of the waters that were dropped from this year’s stocking schedule is on our webpage at: [www.ct.gov/deep/fishing](http://www.ct.gov/deep/fishing), along with an interactive trout stocking map ([www.ct.gov/deep/troutstockingmaps](http://www.ct.gov/deep/troutstockingmaps)) that anglers should find very useful for planning their next outing. The new application (mobile friendly) provides the number of days since the last stocking at each of our stocked waters enabling anglers to search for their favorite waterbody or by that have been recently stocked.

## MARINE FISHING REPORT



Surface water temperatures in Long Island Sound (LIS) are in the low 50's °F. Check out the following web sites for more detailed water temperatures and marine boating conditions:

<http://www.mysound.uconn.edu/stationstat.html>

[http://marine.rutgers.edu/mrs/sat\\_data/?nothumbs=1](http://marine.rutgers.edu/mrs/sat_data/?nothumbs=1)

<http://www.ndbc.noaa.gov/>

<http://www.wunderground.com/MAR/AN/330.html>

**Connecticut State Boundary Line in Long Island Sound.** Anglers please note: Though Connecticut has reciprocity with neighboring states (New York, Rhode Island, Maine and Massachusetts), residents of Connecticut are required to have a CT Resident Marine Waters Sport Fishing License to fish in the Marine District.

**STRIPED BASS** fishing is good to excellent for "schoolies" in most of the tidal rivers along the Connecticut shoreline. There are also some keepers in the mix as well (47 inch striped bass from the lower CT and Housatonic Rivers). Striper spots include the Pawcatuck River, Mystic River, Thames River, Niantic River, lower Connecticut River (DEEP Marine Headquarters fishing pier and Dock and Dine), Black Hall River, New Haven Harbor (Sandy Point), the Sound School Fishing Pier, Housatonic River and Norwalk Harbor including the islands. Sand and blood worms have been working the best, especially in turbid waters around the high tide. Casting swimming lures, small jigs (Chartreuse color) with twister tails, soft baits, and Kastmasters and other metal lures will also work. Fishing should get better as we approach the magical 55°F mark! The top-water fishing has been fantastic...go out enjoy some of the best fishing in New England.

**WINTER FLOUNDER** fishing remains slow but improving in the Poquonock River at Bluff Point State Park, Niantic River, The Brothers, Jordan Cove, lower Saugatuck River, Calf Pasture Beach area, Norwalk Islands (Cockonoe) and the channels in Norwalk Harbor. Other flounder spots include the lower Mystic River, and the mouth of the Thames River in the Pine Island area including Baker Cove.

**WHITE PERCH** fishing is good to excellent for these tasty panfish in most of the tidal rivers and coves along the Connecticut shoreline. Perch spots include the Pawcatuck River, Mystic River, Thames River, upper Niantic River, lower Connecticut River (DEEP Marine Headquarters fishing pier), Black Hall River, Lieutenant River, North/South Cove and Hamburg Cove. Shrimp and small worms are the key to success.

### BLACK SEA BASS & SCUP OPENS

**MAY 1:** Based on the CT DEEP Marine Fisheries program trawl survey there are plenty of sea bass and scup in the sound. Looks to be a fantastic opener.

**WEAKFISH** have also arrived in Long Island Sound! The Race, Plum Gut

### SHORE FISHING SPOTS & TIDE TABLE INFORMATION

To find a saltwater shore fishing spot close to where you live, go to the following website:

<http://www.lisrc.uconn.edu/coastalaccess/>.

For **Enhanced Opportunity Shore Fishing** sites and other fishing information including a site map go to the following website

<http://www.depdata.ct.gov/maps/saltwaterfish/map.htm>.

Please see page 64 of the **2017 CT Angler's Guide** for CT tide information.

and the north side of Long Island including Gardiners Bay and the Peconics are early weakfish spots. Look for weakfish in Guilford/New Haven Harbor over to the Milford/Stratford area.

### CAUGHT A TROPHY FISH - MARINE TROPHY FISH AWARD PROGRAM AFFIDAVIT

## Bonus Striped Bass Fishing Program

The Department of Energy and Environmental Protection is again conducting the **Bonus Striped Bass Fishing Program, which will run from May 1 through December 31 in 2017.**

**Tags are almost all gone and only a few remain at DEEP Offices and Facilities listed below.** There is a limit of TWO TAGS annually per Connecticut fishing license holder. However, for convenience, one person may pick up at most FOUR tags by presenting valid Connecticut fishing licenses for two anglers. Children are also eligible to receive a tags by signing up for a free [Youth Fishing Passport](#). **Tags will be available on a first come first serve basis for as long as supplies last.**

<i>DEEP Offices/Facilities</i>	<i>Address</i>	<i>Town</i>	<i>State</i>	<i>Zip</i>
<a href="#">Marine Headquarters</a> , M-F 8am-4pm, 860-434-6043		<b>SOLD OUT</b>		
<a href="#">Eastern District</a> , M-F 8:30am-4pm, 860-295-9523	209 Hebron Ave	Marlborough	CT	06447
<a href="#">Western District</a> , M-F 8:30am-4pm, 860-485-0226		<b>SOLD OUT</b>		
<a href="#">Franklin WMA</a> , 860-642-7239 M-F 8:30am-4:30pm	391 Route 32	Franklin	CT	06254
<a href="#">Sessions Woods WMA</a> , M-F 8:30am-4pm, 860-675-8130	341 Milford Street (Rte 69)	Burlington	CT	06013
<a href="#">CTDEEP Main Office</a> M-F 9am-4pm, 860-424-3105		<b>SOLD OUT</b>		

The Connecticut Department of Energy and Environmental Protection is an Affirmative Action/Equal Opportunity Employer that is committed to complying with the requirements of the Americans with Disabilities Act. Please contact us at (860) 418-5910 or [deep.accommodations@ct.gov](mailto:deep.accommodations@ct.gov) if you have a disability and need a communication aid or service; have limited proficiency in English and may need information in another language; or if you wish to file an ADA or Title VI discrimination complaint.

### DEEP WEEKLY Fishing Report



Connecticut Department of  
**ENERGY & ENVIRONMENTAL PROTECTION**

79 Elm Street, Hartford, CT 06106

[www.ct.gov/deep](http://www.ct.gov/deep)